

- * LVDS Output
- * Fast Delivery
- * Industry Standard Packaging

Applications

- * Serial Communications
- * Routers
- * Switches
- * WAN Interfaces
- * Test Equipment



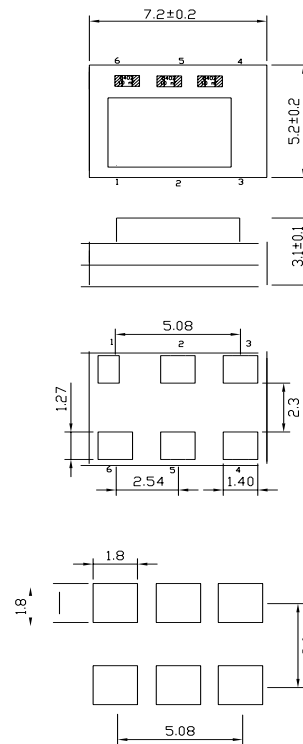
Part Numbering Example: CTAL L Z - A3 B3 - 22.5792 TS

CTAL	L	Z	A5	B3	22.5792	TS
SERIES	VOLTAGE	PACKAGING OPTIONS	OPERATING TEMP.	STABILITY	FREQUENCY	TRI-STATE
CTAL	L = 3.3V	Blank = Bulk Z = Tape and Reel	Blank = 0°C ~ +70°C A5 = -20°C ~ +70°C A3 = -30°C ~ +75°C	B3 = ±2.5 ppm		TS = Tri-State

Specifications:	Min	Typ	Max	Unit
Frequency Range:	1.5		200	MHz
Stability:	- 2.5		+ 2.5	ppm
Supply Voltage:	3.135	3.3	3.465	V
Vdd Rise Time:	100			µS
Operating Temperature:	-30		+ 75	°C
Storage Temperature:	-45°C		+ 85	
Duty Cycle:	45		55	%
Start-Up Time:		3	10	mS
Aging: (ppm/1st Year) Ta=25C, Vdd=3.3V			1	ppm
Supply Current:			130	mA
Short Circuit Current:		± 50		mA
RMS Period Jitter:		10		pS
RMS Integrated Jitter: 12kHz to 20MHz		15		pS
Phase Noise @ 10kHz:			-100	dBc/Hz
Output Voltage: Voh Vol	0.9		1.6	V V
Output Differential Voltage:	240	350	460	mV
Rise/Fall Time:		0.4	0.8	nS
Output Level:	LVDS			
Packaging:	Tape and Reel 1000 pcs per Reel			

CTAL

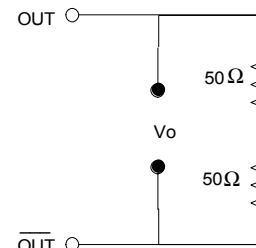
Dimensions are in mm



- Pin Function
- 1 Control -Tristate with pull up
 - 2 Do Not Connect
 - 3 Ground
 - 4 Output+
 - 5 Output-
 - 6 Vdd

Solder Pad Layout

LVDS Levels Test Circuit



Tristate internal pull up. Output active when high.

