

Programmable CMOS VCXO

CARDINAL COMPONENTS

Platinum Series **CAV**

- * 1.8 mm Max. Height
- * Fast Delivery
- * HCMOS Output

Applications

- * Serial Communications
- * Test Equipment
- * Industrial Control



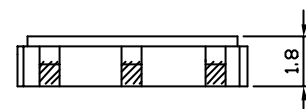
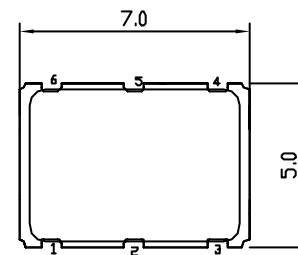
Part Numbering Example: CAV Z - A6 BP - 22.5792

CAV	Z	A6	BP	22.5792
SERIES	PACKAGING OPTIONS	OPERATING TEMP.	STABILITY	FREQUENCY
CAV	Blank = Bulk Z = Tape and Reel	A6 = 0°C ~ +70°C AB = -30°C ~ +70°C	BP = ±50 ppm	

Specifications:

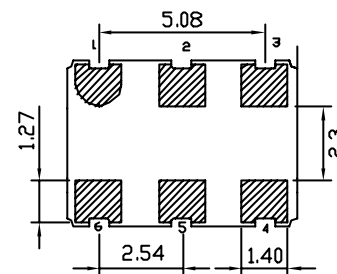
Frequency Range:	1.500 MHz to 200.000 MHz
Available Stability Options:	±50 ppm
Output Series:	HCMOS
Input Voltage:	+3.3 VDC ±5%
Vdd Rise Time:	Min: 100 μS
Frequency Tuning Range:	±100 ppm
External Control Voltage:	+1.65 VDC, ±1.35 VDC @ 3.3V input
Output Voltage:	HCMOS $V_{OL}=10\%V_{DD}$ V Max. HCMOS $V_{OH}=90\%V_{DD}$ V Min.
Operating Temperature	0°C to +70°C -30°C to +70°C
Output Load:	15 pF
Maximum Input Current:	40 mA
Maximum Rise/Fall Time:	4 nS
Duty Cycle:	45/55%
Phase Noise@10 kHz:	< -100dBc/Hz
RMS Integrated Jitter: 12kHz to 20MHz	< 20 pS
RMS Period Jitter:	< 10 pS
Storage Temperature:	-40°C to +85°C
Packaging:	Tape and Reel (1K per Reel)

CAV

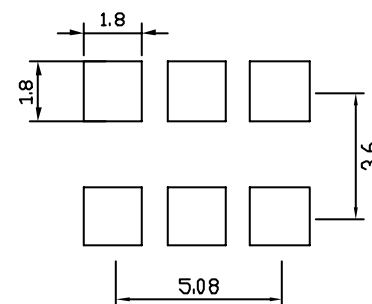


PIN FUNCTION

- 1 V control
- 2 OE (WITH PULLUP)
- 3 GND
- 4 OUTPUT
- 5 DO NOT CONNECT
- 6 VDD



Solder Pad Layout



Tristate internal pull up resistor. Output active when high.

Cardinal Components, Inc.

155 Route 46 West
Wayne, NJ 07470

Rev: V-090414-13



V-1

TEL: (973)785-1333

E-MAIL: sales@cardinalxstal.com

WEB: http://www.cardinalxstal.com