

Surface Mount Clock Oscillator

Series **CC065H**

- *Tristate capable*
- *1.7 mm height*
- *50 pf load compatible*



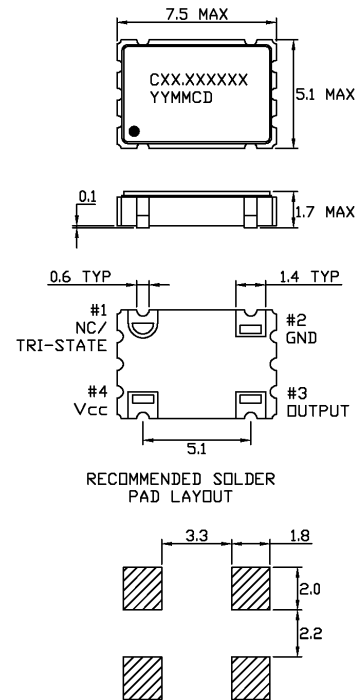
Part Numbering Example: **CC065H Z - A2 B2 45 - 33.333 TS**

| CC065H | Z | A2 | B2 | 45 | 33.333 | TS |
|--------|--|---|-----------------------------------|-------------------------------|-----------|--------------------|
| SERIES | ADDED FEATURES | OPERATING TEMP. | STABILITY | SYMMETRY | FREQUENCY | TRI STATE |
| CC065H | BLANK = BULK PACK Z = TAPE AND REEL | Blank = 0°C ~ +70°C A2 = -40°C ~ +85°C | Blank = ±100 ppm B2 = ± 50 ppm | Blank = 40/60% 45 = 45/55% | | Tri State Standard |

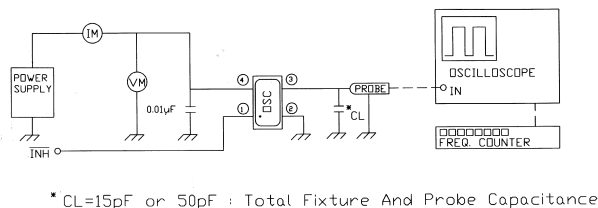
Specifications:

| | |
|--------------------------------------|--|
| Frequency Range: | 1.8432 MHz to 80.000 MHz |
| Available Stability Options: | ±100 ppm <i>Standard</i> ±50 ppm |
| Output Series: | LSTTL / HCMOS |
| Input Voltage: | +5.0 VDC ±10% |
| Operating Temperature Range Options: | -10°C to +70°C <i>Standard</i> -40°C to +85°C |
| Output Voltage: | V _{OL} = 0.5 V Max. V _{OH} = 4.5 V Min. |
| Output Load: | 10 TTL, 50 pf CMOS |
| Maximum Input Current: | 27 mA (1.8432 to 31.999 MHz) 45 mA (32.000 to 49.999 MHz) 75 mA (50.000 to 80.000 MHz) |
| Maximum Rise/Fall Time: | 7 ns |
| Duty Cycle: | 40/60% <i>Standard</i> 45/55% |
| Max. Start-Up Time: | 10 ms |
| Tristate Input: | +0.80 VDC Max. to Disable +3.60 VDC Min. to Enable or open to Enable |
| Storage Temperature: | -55°C to +125°C |
| Packaging: | Tape and Reel (1K per Reel) |

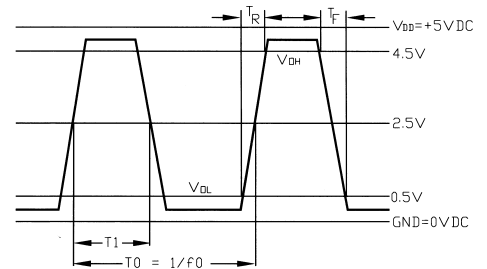
CC065H



TEST CIRCUIT



OUTPUT WAVE FORM



$$\text{SYMMETRY} = \left(\frac{T_1}{T_0} \right) \times 100\%$$

